

HEAT TREAT EQUIPMENT

Quality Used Heat Treating Equipment

Item V-1226 – Furnace – Car Bottom, Coreco

Manufacturer: Coreco
Type: Direct-Fired Car Bottom Furnace
Model Number: 9617
Load Dim's: 102" wide x 204" deep x 48" high
Fuel/Max Temp: Natural gas / 1700°F
Power: 480 Volts, 3-Phase, 60 Hz
Burners: Eight Eclipse Model 82 MVTA burners
Controls: Free standing control panel
..... Honeywell Temperature & High-Limit Controls
..... Pyronics flame monitoring system
General: Fiber lined furnace
..... Vertical lift powered slant door
Car: Refractory floor and attached bottom sand seal
..... Cable winch-powered



HEAT TREAT EQUIPMENT

Quality Used Heat Treating Equipment

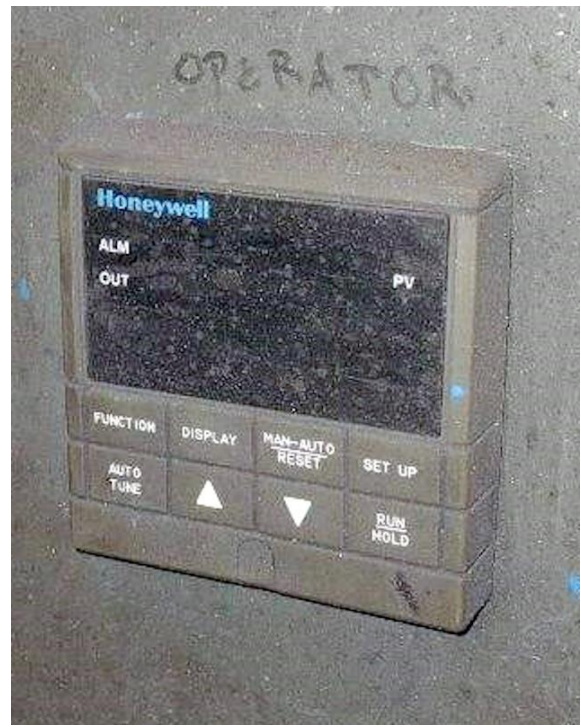
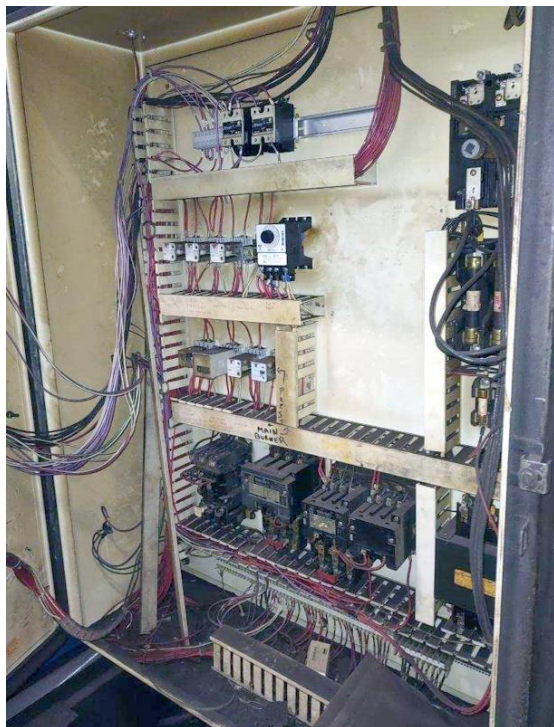
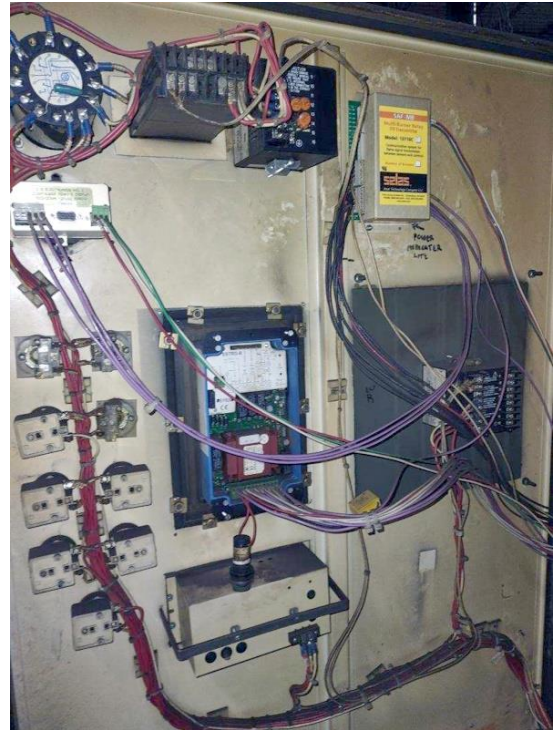
Item V-1226 – Furnace – Car Bottom, Coreco



HEAT TREAT EQUIPMENT

Quality Used Heat Treating Equipment

Item V-1226 – Furnace – Car Bottom, Coreco



HEAT TREAT EQUIPMENT

Quality Used Heat Treating Equipment

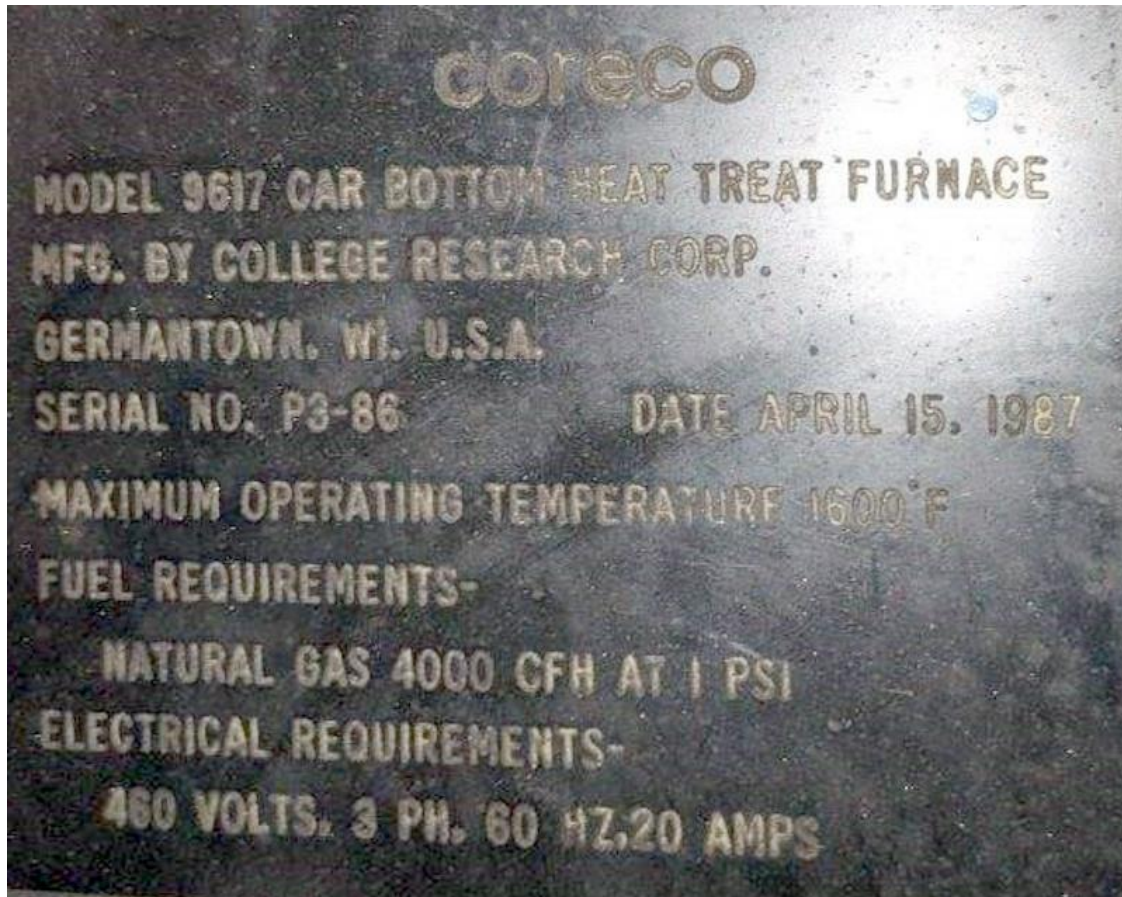
Item V-1226 – Furnace – Car Bottom, Coreco



HEAT TREAT EQUIPMENT

Quality Used Heat Treating Equipment

Item V-1226 – Furnace – Car Bottom, Coreco



NOTE: equipment is sold “AS IS, WHERE IS” and buyer shall indemnify seller against and hold seller harmless from any and all claims, actions and damages arising out of the possession, operation, condition or use of the equipment. Seller suggests that you contact the manufacture for important information pertaining to safety and proper use and operation of the above equipment. For safety reasons, we request that you do not place the equipment into service until you have received current safety instructions from the manufacturer. Specifications are taken with care, but are not certified. No warranties or guarantees, written or implied.