

HEAT TREAT EQUIPMENT

Quality Used Heat Treating Equipment

Item V-1181 –Oven – Walk-In, Grieve

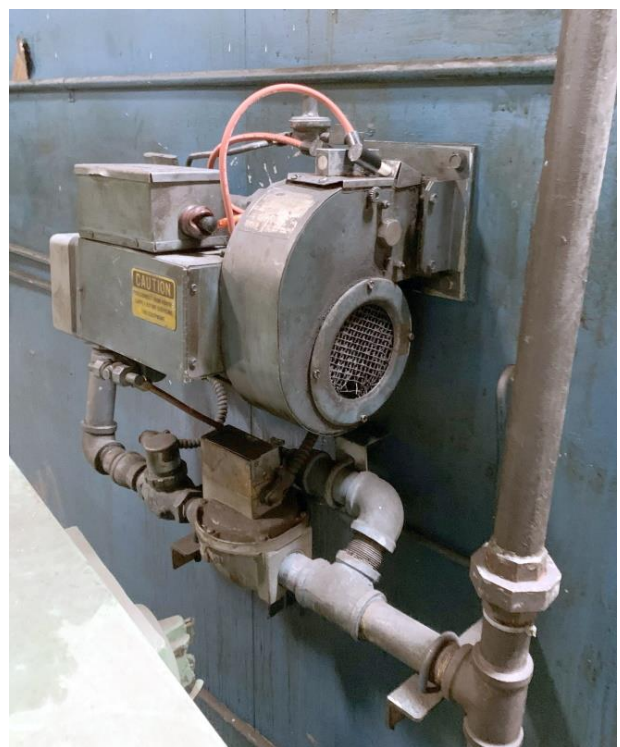
Manufacturer: Grieve
Type: Electric Batch Oven
Model: B2-750
Serial: 14614
Max Temp: 750°F
Workable Dim's: 52" wide x 76" deep x 72" high
Overall Dim's: 87" wide x 129" deep x 90" high
Shipping Weight: 3600 pounds
Rated: 460 V / 3-Phase / 60 Cycle
Heated: 40 KW, 400,000 BTU/Hr
Controls: Watlow high limit & temperature controller
General: Blower Motor: 3300 CFM, 2 HP



HEAT TREAT EQUIPMENT

Quality Used Heat Treating Equipment

Item V-1181 –Oven – Walk-In, Grieve



HEAT TREAT EQUIPMENT

Quality Used Heat Treating Equipment

Item V-1181 –Oven – Walk-In, Grieve



HEAT TREAT EQUIPMENT

Quality Used Heat Treating Equipment

Item V-1181 –Oven – Walk-In, Grieve



NOTE: equipment is sold “AS IS, WHERE IS” and buyer shall indemnify seller against and hold seller harmless from any and all claims, actions and damages arising out of the possession, operation, condition or use of the equipment. Seller suggests that you contact the manufacture for important information pertaining to safety and proper use and operation of the above equipment. For safety reasons, we request that you do not place the equipment into service until you have received current safety instructions from the manufacturer. Specifications were taken with care, but are not certified. No warranties or guarantees, written or implied.